

PROFIBUS-DP D-SUB 9PIN CONNECTOR



[BA10]



[BB10]



[BA20]



[BB20]



[BA30]



[BA50]



[BA60]



[BB60]



[BA80]



[BB80]

제품문의처

한국샤이니전기 www.shinykorea.com

TEL : 032 -588 -2895

FAX : 032 -588 -2895

e-mail : top@shinykorea.com

shiny@shinykorea.com

본 커넥터에 대한 제품문의는 위의 연락처로
연락주시면 친절히 안내해 드리겠습니다.

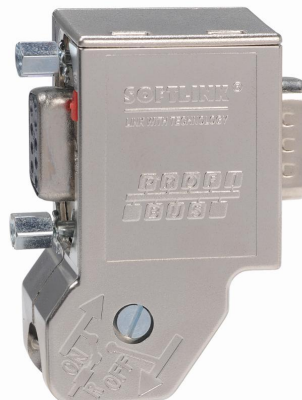
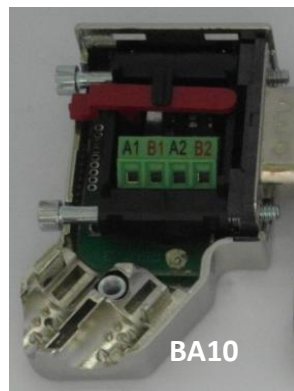
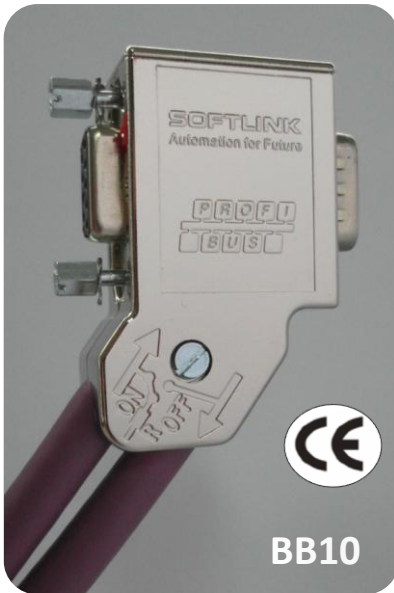
참고로, PROFIBUS DP CABLE과 DP CONNECTOR간의
하네스작업도 가능합니다.

상세한 제품사양 및 접속방법은 계속되는 페이지를 참조해 주십시오

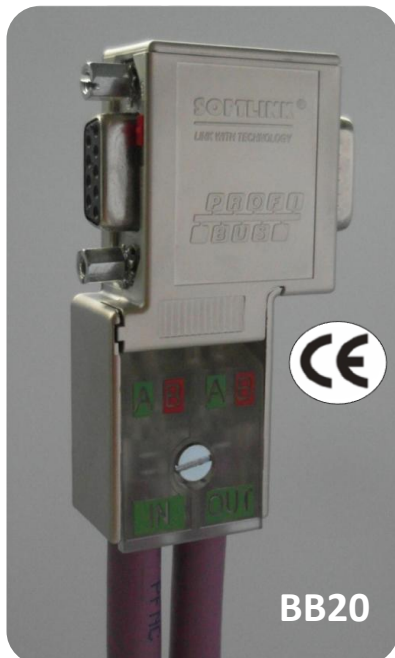
PROFIBUS-DP D-SUB 9PIN CONNECTOR [BA10,BB10]



Dimensions	55 x 40 x 17mm
Weight	Approx. 40g
Outlet angle	35°
Termination	With termination resistors inside, can be changed the access status through sliding switch
Baud Rate	Up to 12Mbit/s
PROFIBUS Interface	SUB-D connector, 9 way PROFIBUS cable (Fc standard cable)
Operating voltage	4.75V~5.25VDC voltage (External input)
Maximum operating current	12.5mA
Permissible ambient temperature	Working state 0°C ~+60°C Storage and transport -25°C~+80°C
Relative Humidity	75% (25°C)
Ingress Protection	IP40



PROFIBUS -DP D-SUB 9PIN CONNECTOR [BA20,BB20]



Dimensions	72 x 40 x 17mm
Weight	Approx. 40g
Outlet angle	90°, Fast connection
Termination	With termination resistors inside, can be changed the access status through sliding switch
Baud Rate	Up to 12Mbit/s
PROFIBUS Interface	SUB-D connector, 9 way PROFIBUS cable (Fc standard cable)
Operating voltage	4.75V~5.25VDC voltage (External input)
Maximum operating current	12.5mA
Permissible ambient temperature	Working state 0°C ~+60°C
	Storage and transport -25°C ~ +80°C
Relative Humidity	75% (25°C)
Ingress Protection	IP40



1.케이블 피복을 벗긴다.

2. 케이블을 접속구에 삽입.

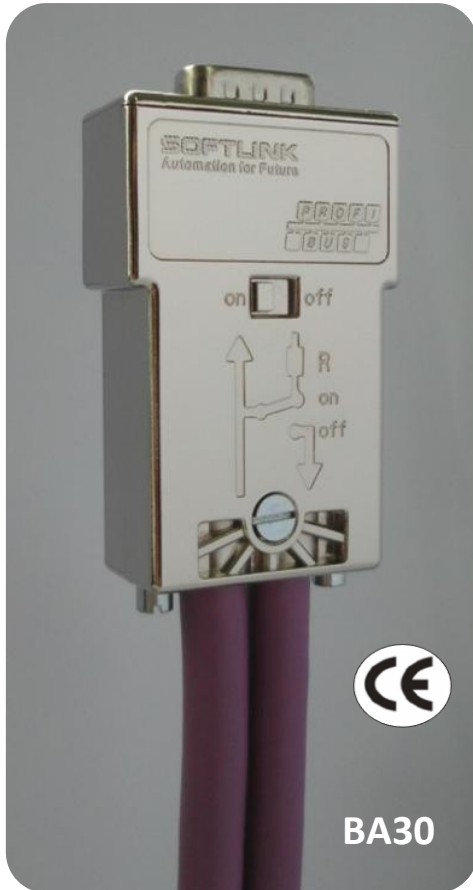
3. CAP을 누르고, 일자형 볼트 체결.

*케이블 접속방법은 BA20, BB20, BA60, BB60모두 동일합니다. 상세한 접속방법은 BA60을 참조해주시요.

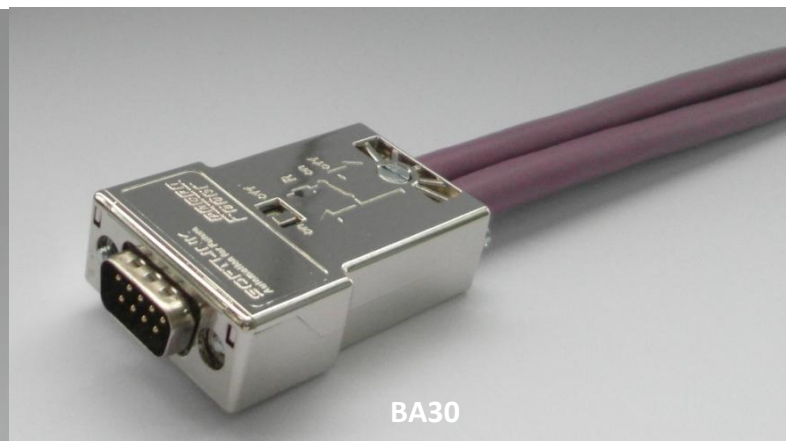
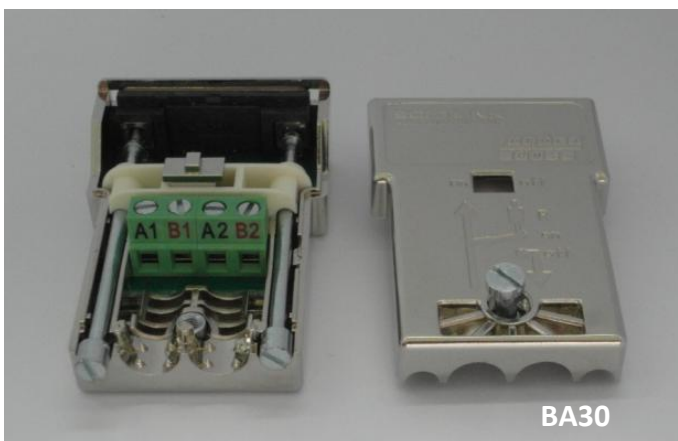
PROFIBUS -DP D-SUB 9PIN CONNECTOR [BA30]

메탈케이스의
완벽차폐
효과

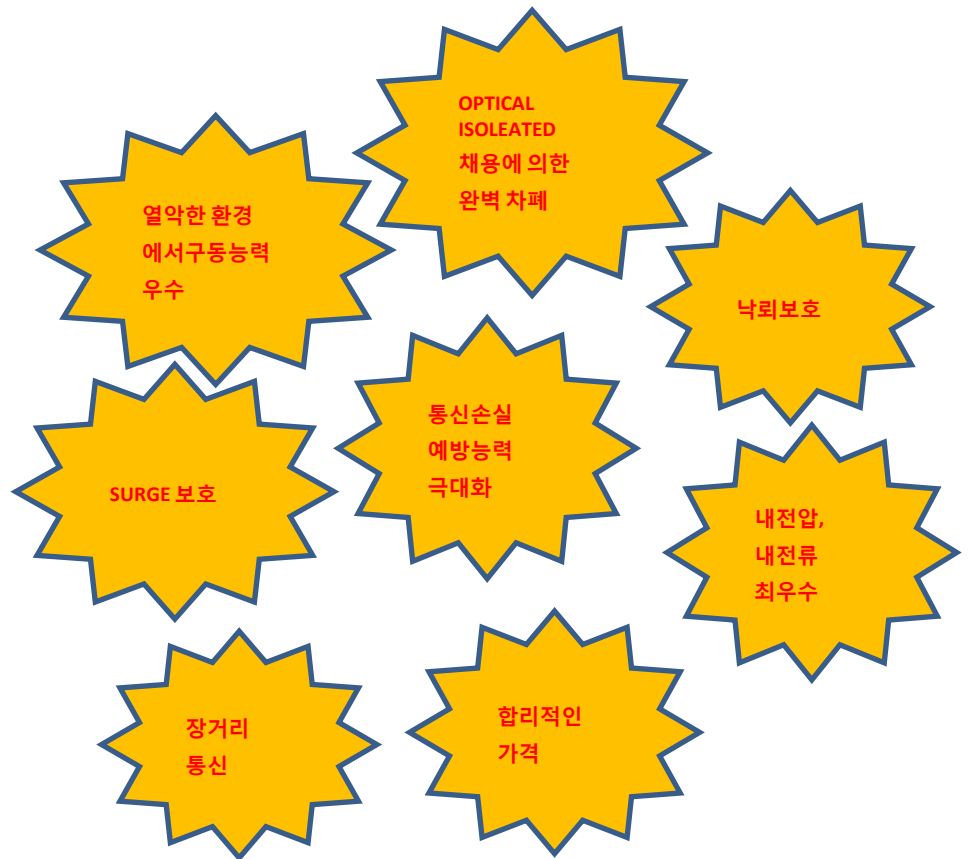
합리적인
가격



Dimensions	55 x 40 x 17mm
Weight	Approx. 40g
Outlet angle	180
Termination	With termination resistors inside, can be changed the access status through sliding switch
Baud Rate	Up to 12Mbit/s
PROFIBUS Interface	SUB-D connector, 9 way PROFIBUS cable (Fc standard cable)
Operating voltage	4.75V~5.25VDC voltage (External input)
Maximum operating current	12.5mA
Permissible ambient temperature	Working state 0°C ~+60°C Storage and transport -25°C~+80°C
Relative Humidity	75% (25°C)
Ingress Protection	IP40

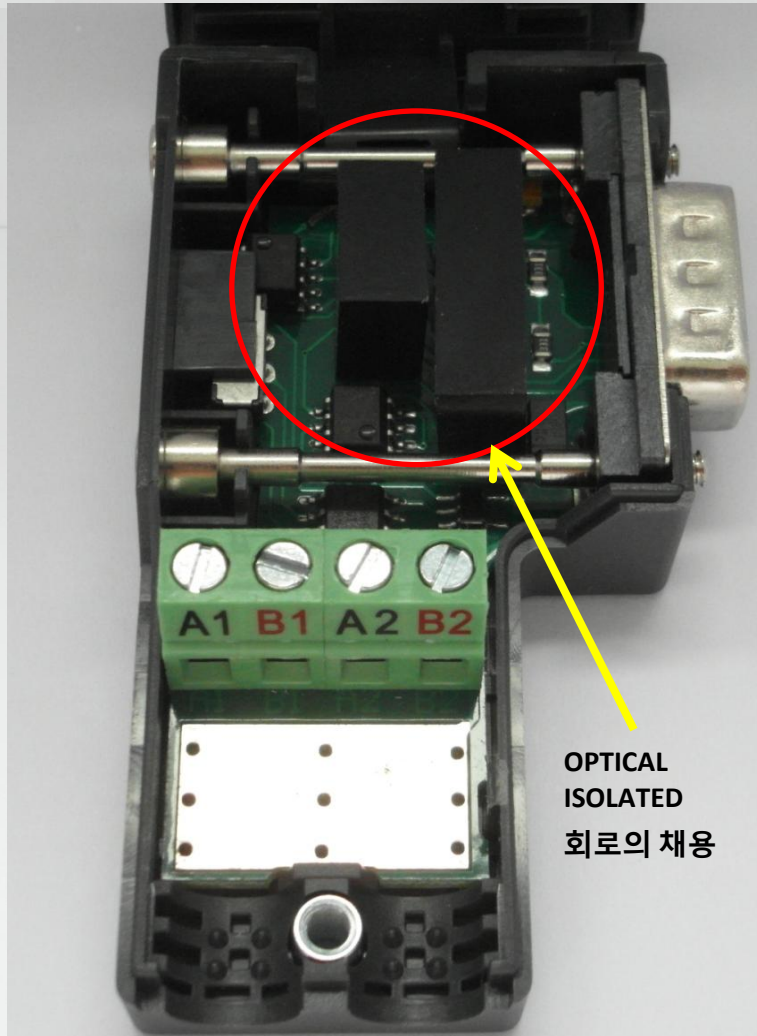
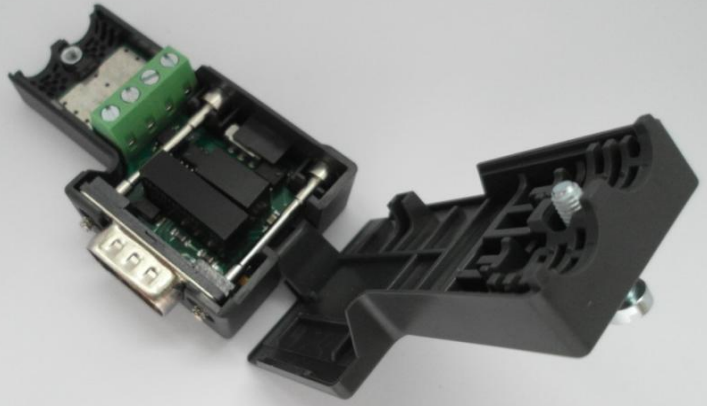


PROFIBUS -DP D-SUB 9PIN CONNECTOR [BA50]



Product Specifications	Without programming port, Optical isolation
Dimensions	67 x 40 x 17mm
Weight	Approx. 40g
Outlet angle	90°
Termination	With termination resistors inside, can be changed the access status through sliding switch
Baud Rate	Up to 6MBit/s (12Mbit/s-tailor-made)
PROFIBUS Interface	SUB-D connector, 9 way PROFIBUS cable (Fc standard cable)
Operating voltage	4.75V~5.25V DC voltage (External input)
Maximum isolation voltage	1000VDC or 3500V pulse voltage
Maximum operating current	12.5mA
Permissible ambient temperature	Working state 0°C ~+60°C
	Storage and transport -25°C ~+80°C
Relative Humidity	75% (25°C)
Ingress Protection	IP40

BA50

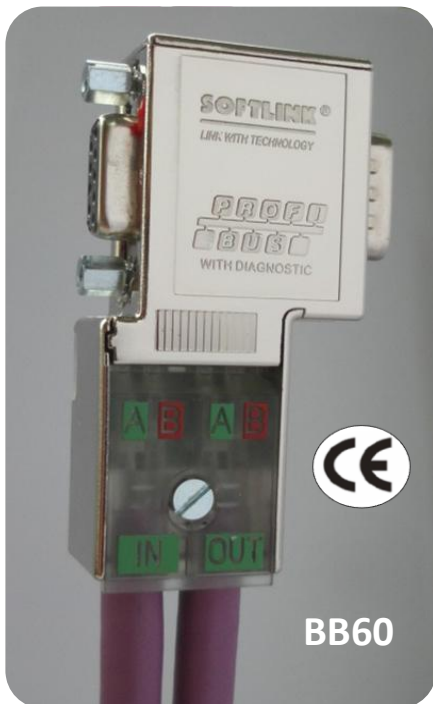


OPTICAL
ISOLATED
회로의 채용

PROFIBUS -DP D-SUB 9PIN CONNECTOR [BA60,BB60]



BA60



BB60



Product Specifications	LED diagnostic, without progr.
Number can be used in a Single bus	26
Dimensions	72 x 40 x 17mm
Weight	Approx. 40g
Cable Outgoing	90°, Fast-connect
Termination	With termination resistors inside, can be changed the access status through sliding switch
Baud Rate	Up to 12Mbit/s
PROFIBUS Interface	SUB-D connector, 9 way PROFIBUS cable (FC standard cable)
Operating voltage	4.75V~5.25V DC voltage (External input)
Maximum operating current	12.5mA
Permissible ambient temperature	Working state 0°C ~ +60°C
	Storage and transport -25°C ~ +80°C
Relative Humidity	75% (25°C)
Degree of Protection	IP40

BA60
BB60



자가진단형 LED



자가진단형 LED

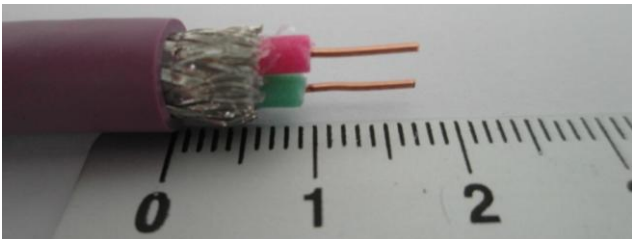
자가진단형 LED

- 주황 : 종단저항 동작 지시등
- 파랑 : 시스템하드 연결 지시등
(단선, 탈착, 타 하드웨어 연결등...)
- 녹색 : 네트워크 송수신 지시등

케이블 접속방법

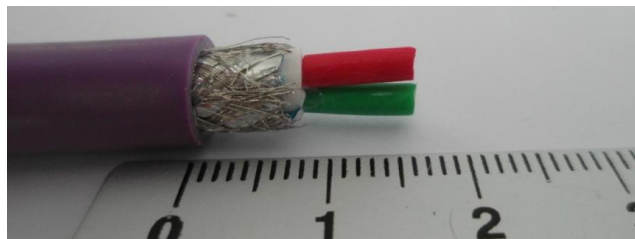
*DP CABLE은 일반타입과 FAST CONNECT TYPE 2종으로 나뉘어 집니다.

본 커넥터는 FAST CONNECT TYPE의 커넥터로 일반타입의 CABLE과 FAST CONNECT케이블 모두 사용가능합니다. 접속방법은 아래와 같습니다.



[일반타입의 피복작업]

- 섀드 :약 6mm
- 절연체 : 약 3mm
- COPPER : 약 7mm



[FC타입의 피복작업]

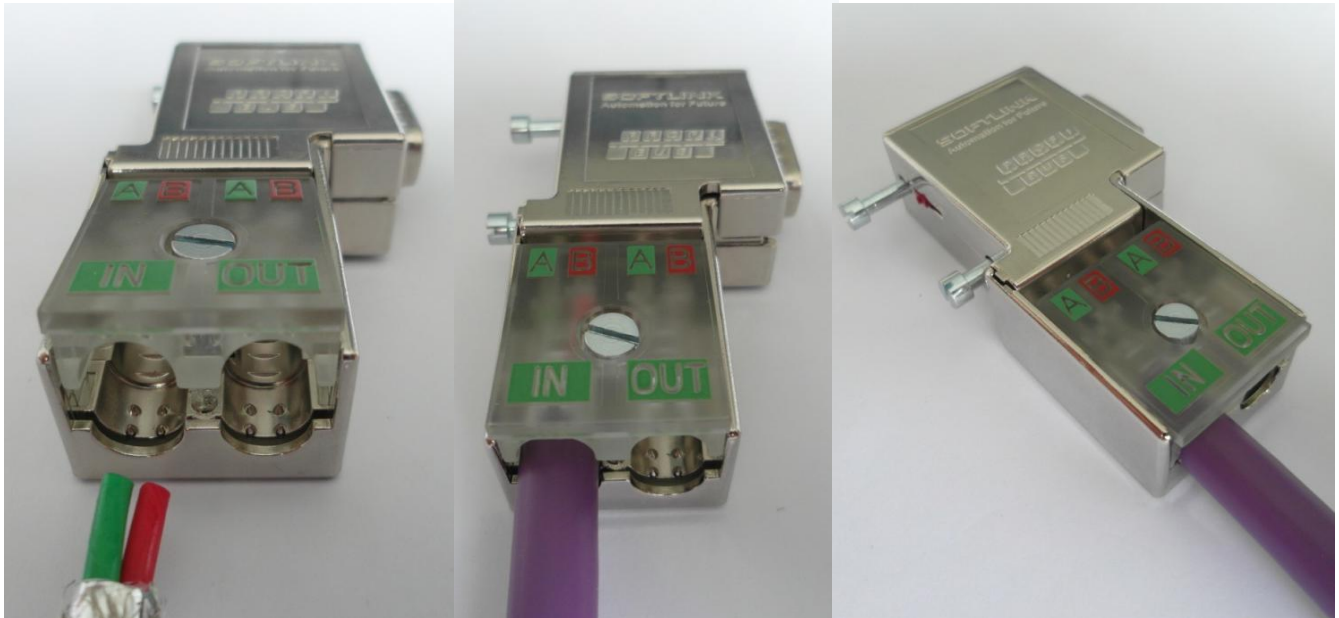
- 섀드 :약 6mm
- 절연체 : 약 10mm
- COPPER : 피복을 벗기지 않음.

1. 일반 PROFIBUS-DP 케이블인 경우



- 1.케이블 피복을 벗긴다.
2. 케이블을 접속구에 삽입.
3. CAP을 누르고, 일자형 볼트 체결.

2. FAST CONNECT형 PROFIBUS-DP 케이블인 경우



*참조 : 종단저항이 내장되어 있으며, ON/OFF를 선택할 수 있습니다. 종단저항을 ON에 둘 경우, OUTGOING단의 통신은 중단됩니다.

PROFIBUS -DP D-SUB 9PIN CONNECTOR [BA80,BB80]



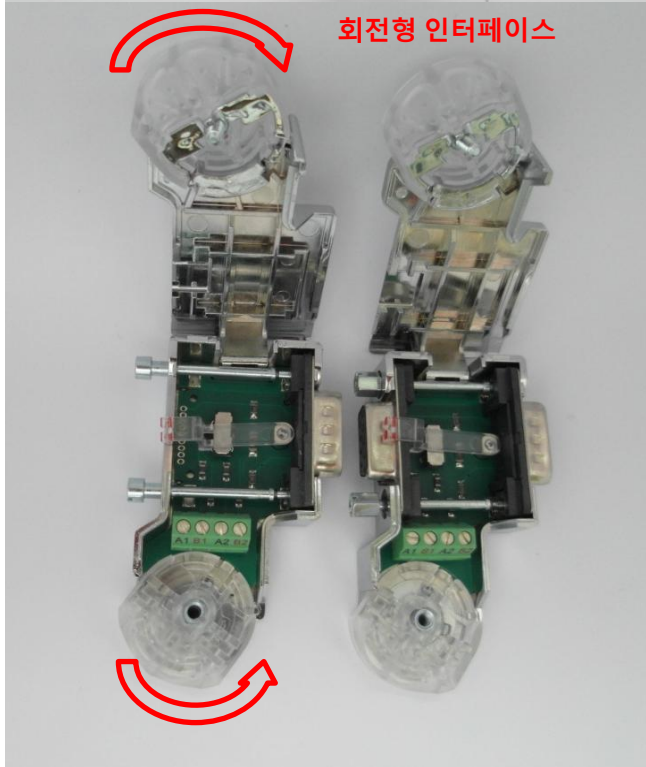
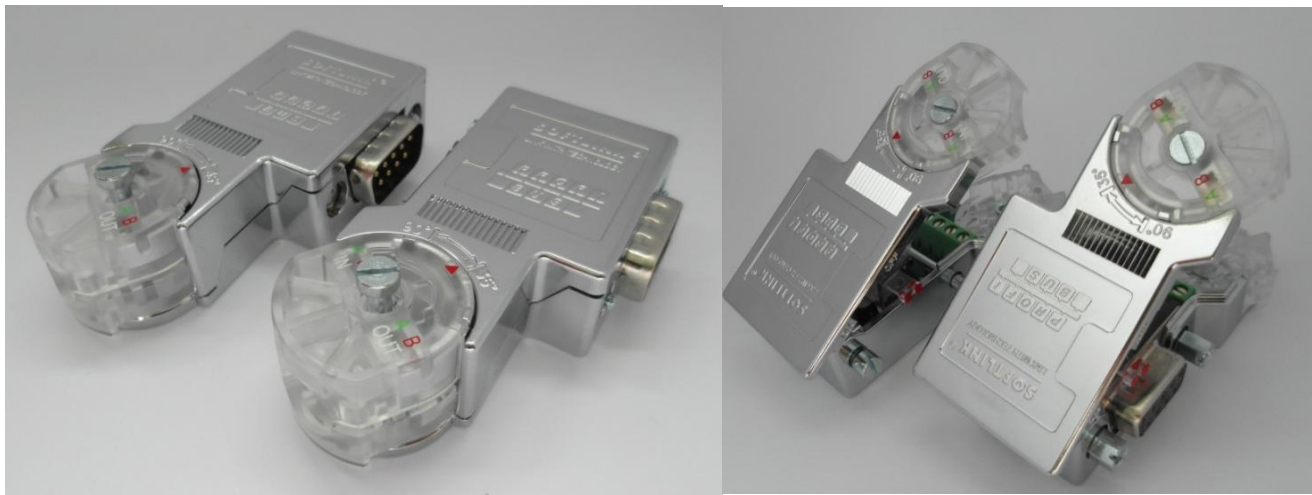
BA80



BB80

Product Specifications	Without progr.
Dimensions	68 x 40 x 17mm
Weight	Approx. 40g
Outlet angle	EasyAngle
Termination	With termination resistors inside, can be changed the access status through sliding switch
Baud Rate	Up to 12Mbit/ s
PROFIBUS Interface	SUB-D connector, 9 way PROFIBUS cable (Fc standard cable)
Operating voltage	4.75V~5.25V DC voltage (External input)
Maximum operating current	12.5mA
Permissible ambient temperature	Working state 0°C ~+60°C
	Storage and transport -25°C ~ +80°C
Relative Humidity	75% (25°C)
Ingress Protection	IP40

35도, 90도 겸용



제품문의처
한국사이니전기 www.shinykorea.com
TEL : 032 -588 -2895
FAX : 032 -588 -2895
e-mail : top@shinykorea.com
shiny@shinykorea.com

본 커넥터에 대한 제품문의는 위의 연락처로
연락주시면 친절히 안내해 드리겠습니다.
참고로, PROFIBUS DP CABLE과 DP CONNECTOR간의
하네스작업도 가능합니다.